

To check your settings

Access “System Management”, then “System Settings”:

The screenshot displays the pointOne POS system interface. At the top right, the date and time are shown as "Sunday, August 2nd 2020 (Nicholas)" and the version is "pointOne v1.0.0.0". The interface is divided into several sections:

- Today's Summary:** A table with various sales and financial metrics, all showing "--".
- Today's Sales:** A bar chart showing sales data for the day, with a y-axis ranging from £0.00 to £1.00.
- Terminal Table:** A table with columns for "Terminal", "Cash", and "Total".
- Navigation Buttons:** A grid of buttons for various functions. The "System Settings" button is highlighted with a red box.

Today's Summary	
Total Sales	--
Dry Sales	--
Wet Sales	--
Other Sales	--
Transactions	--
Guests Served	--
Wages/Salaries	--
Service Charge	--
Tables Not Yet Paid	--
Tab's Not Yet Paid	--
Total Inc. Not Yet Paid	--

Terminal	Cash	Total

Navigation Buttons:

- Back
- Record Waste
- Change PIN
- System Settings (highlighted)
- Exit pointOne

Select the "Reporting & Finance" tab:

The screenshot shows the 'System Settings' application window. The 'Reporting & Finance' tab is highlighted with a red box. The interface includes a sidebar on the left with various menu items, a top navigation bar with tabs like 'Advanced', 'System Statistics', 'PMS', 'Terminals', 'Loyalty / Member Accounts', and 'Tables'. The main content area is divided into several sections: 'System Settings' with fields for Terminal Name (KIOSK1), Primary Database Address (127.0.0.1), Failer Database Address, and Registration Key (Verified); 'Automatic User Log-Off' with a dropdown set to 0 seconds; 'Transaction Complete Settings' with radio buttons for 'Return to Logon Screen', 'Return to Open Orders', and 'Do Nothing (Bar Mode Only)'; 'Accessibility Settings' with a 'Button Text Size' dropdown set to 11 and a 'Sample' button; 'Training Mode' and 'Standalone Mode' sections with descriptive text and 'Switch to Training Mode' and 'Switch to Standalone Mode' buttons respectively. At the bottom, there are buttons for 'Set Opening Hours', 'Save', and 'Cancel'. A 'POINT ONE' logo is visible in the top right corner.

System Settings

Advanced | System Statistics | PMS | Terminals | Loyalty / Member Accounts | Tables

General Info | Reporting & Finance | System Settings | Printers/ Screens | Report Printing | Custom Modifiers | Departments

System Settings

Terminal Name: KIOSK1

Primary Database Address: 127.0.0.1

Failover Database Address:

Registration Key: Verified

Registration Key is Valid. This Software is Licensed.

Automatic User Log-Off

Automatically Log User Off after: 0 seconds (0 = Dont Log-Off)

Transaction Complete Settings

Return to Logon Screen Return to Open Orders Do Nothing (Bar Mode Only)

Accessibility Settings

Button Text Size: 11

Sample

Training Mode

The System is Currently in Retailing Mode, press the Button Below to Enable Training Mode. Training Mode should not be used for Live Transactions.

Switch to Training Mode

Standalone Mode

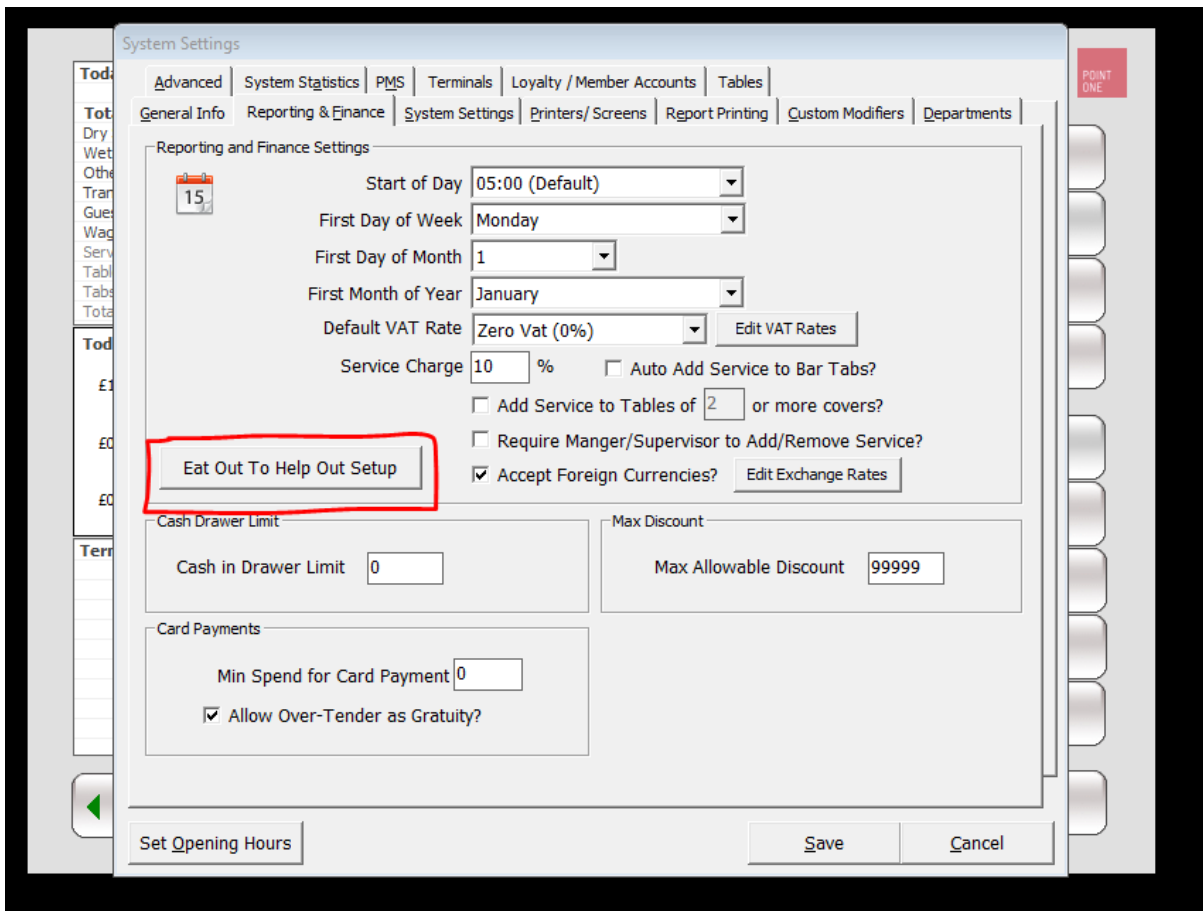
Press the Button Below to Enter Standalone mode. Please note: Certain functionality is restricted in Standalone Mode.

Switch to Standalone Mode

Set Opening Hours

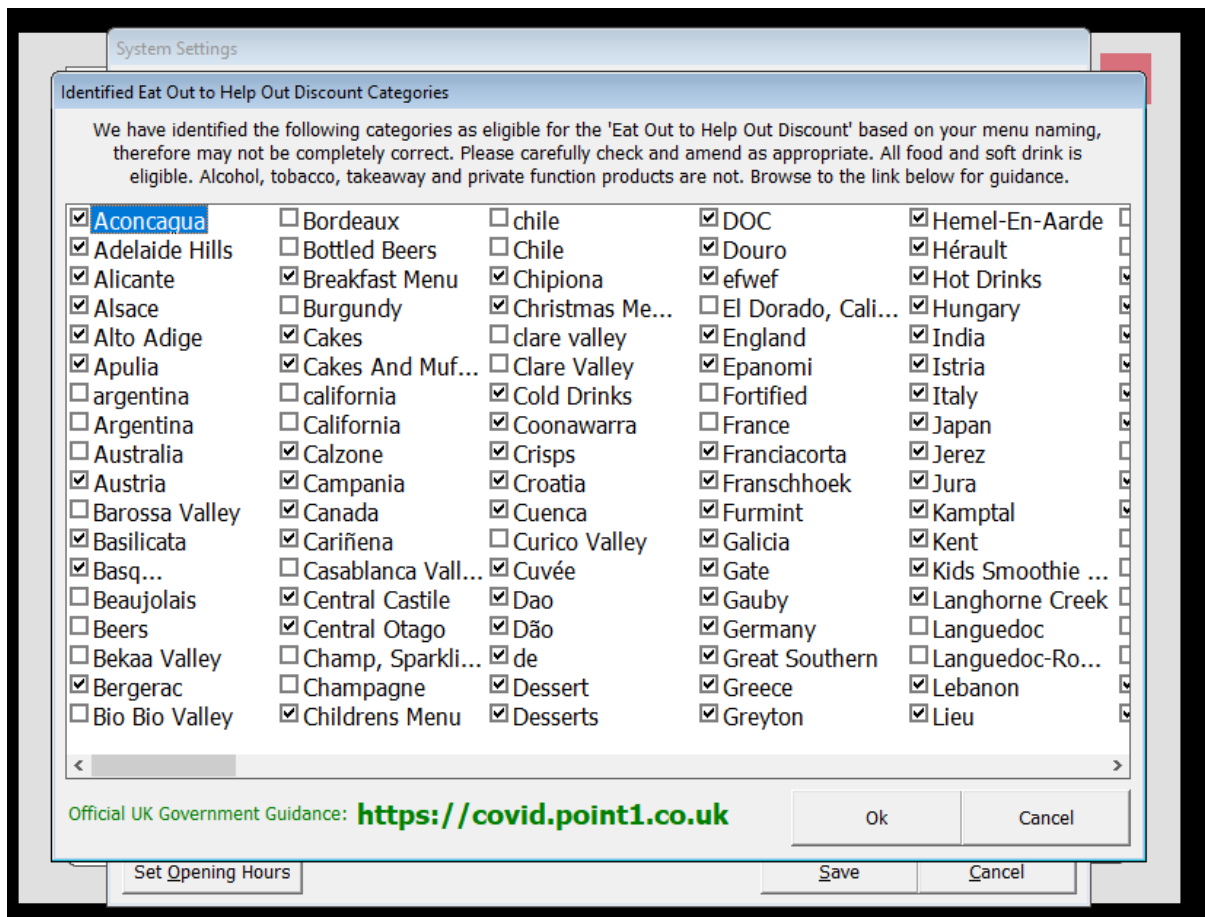
Save Cancel

Hit the **“Eat Out to Help Out Setup”** button:



Double check the **Categories** that we have identified as eligible for the discount. If you need guidance, please follow the [link](#) on this screen to be redirected to the official UK Government guidance.

Please note: The below screenshot contains demo data and is for illustration only. The selected/unselected categories do not necessarily conform to the UK guidelines and are for training purposes only.



Please note: pointOne cannot be held responsible for failure to check the discount category accuracy).